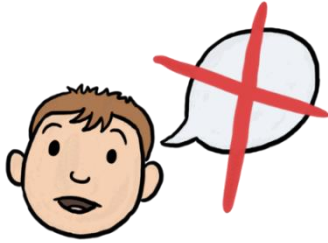
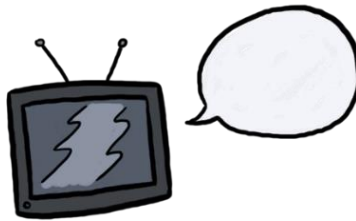


Some Common Signs of Autism Spectrum Disorder in Children



Delay in using, or limited use of language.



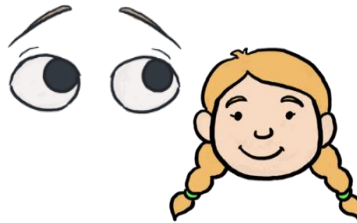
Repeating phrases from others, or television.



No interest in peers. Not seeking or offering comfort.



Unusual sensory responses.



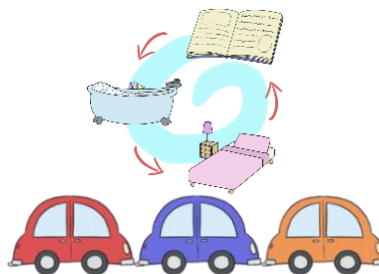
Unusual eye contact. No social smile.



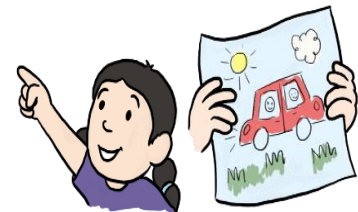
Lack of emotional gestures.



No imagination or imaginative play, or not sharing imaginative ideas with others.



Prefers familiar routines. Displays repetitive behaviours or movements. Arranges objects in patterns or lines.



Does not point to show interest. Does not share interests with others.

Many children without ASD display some or all of these behaviours at times, a skilled professional will need to assess whether the child has ASD or not.