



# Towards a National Neurodivergence Team

# Tîm Cenedlaethol Awtistiaeth

## The National Autism Team



- Established to help support the roll out of the autism agenda in Wales.
- Hosted by the Welsh Local Government Association.
- Always worked in close partnership with Welsh Government, local Autism Leads within local authorities and health boards, key stakeholders and advisory groups.
- Key role in developing resources, awareness raising, training and promoting greater understanding of autism nationally



Tîm Cenedlaethol  
Awtistiaeth

The National  
Autism Team



- Strategic developments
- Policy
- Practice
- Partnership



Supplementary  
Annual Report  
2021/22



# Tîm Cenedlaethol Awtistiaeth

## The National Autism Team

- Events
- Films
- Campaigns
- Schemes and guides
- Innovation
- Once for Wales model



Tîm Cenedlaethol  
Awtistiaeth

---

The National  
Autism Team



- Website and resources
- The IAS
- Forums and coordination – leads are the foundation to the work

Improving the lives of autistic people and their families in Wales





Tîm Cenedlaethol  
Awtistiaeth

The National  
Autism Team



- Key milestones

Media profile

Trusted resource

Wellbeing conference

Covid 19



**Virtual Autism Team  
Wales Covid-19**

# Cydweithio

## Working together



Co- production is the foundation of all our work – move to coproduction essential.

- Our resources began to be produced in collaboration with autistic people, their families and professionals, via :
  - Advisory groups
  - Working groups
  - Partnership working

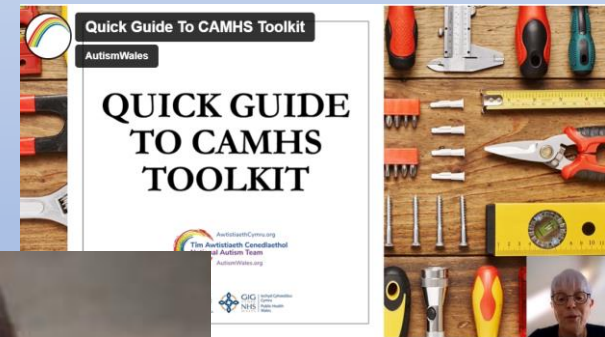
## Promoting the voice of autistic people



# Cydweithio

## Working together

- Parent carer film
- FE and work-based learning film and resources
- Understanding autism film
- Specialist CAMHS toolkit
- Implementation of the Autism Code



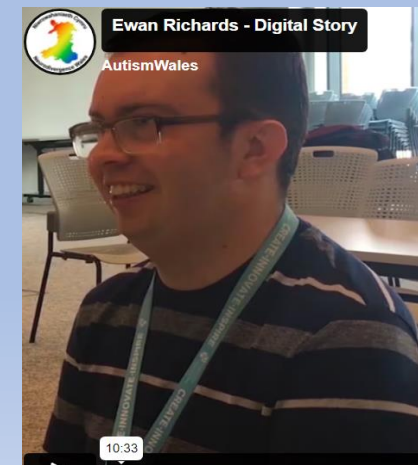


# Cydweithio

## Working together



We have been fortunate to have worked with a wide range of amazing people over many years. Some have been on this journey with us for a long time – Keith our Chair for the day and our next speaker Ewan.





# National Neurodivergence Team



[www.autismwales.org](http://www.autismwales.org)

[www.neurodivergencewales.org](http://www.neurodivergencewales.org)

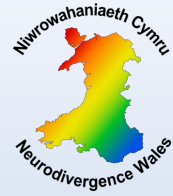
Symud i ND

---

Move to ND

**Natural progression**  
**Evolution not revolution**  
**Building on firm foundations**  
**Aligning with WG agenda**





[www.autismwales.org](http://www.autismwales.org)

[www.neurodivergencewales.org](http://www.neurodivergencewales.org)

Symud i ND

Move to ND

- Remit
- Partners
- Process
- Updated schemes
- Training
- Greater understanding and acceptance
- Thorny issues





Symud i ND

---

Move to ND



[www.autismwales.org](http://www.autismwales.org)

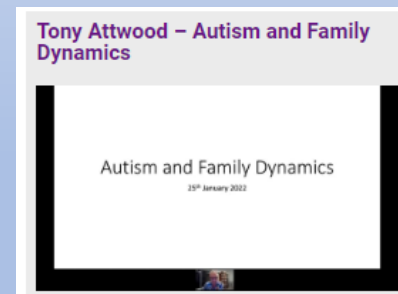
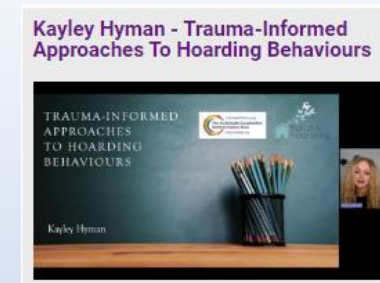
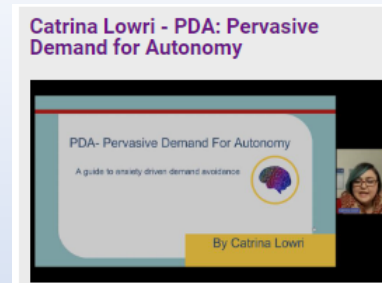
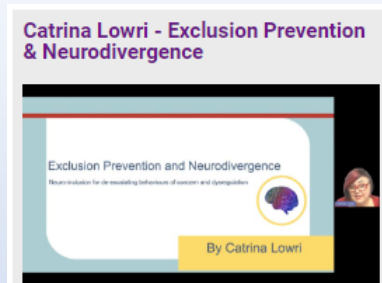
[www.neurodivergencewales.org](http://www.neurodivergencewales.org)



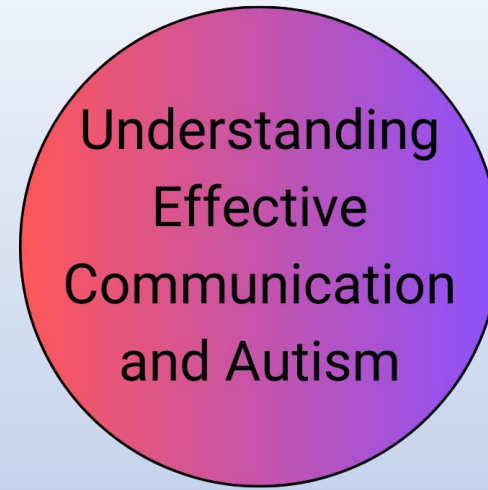
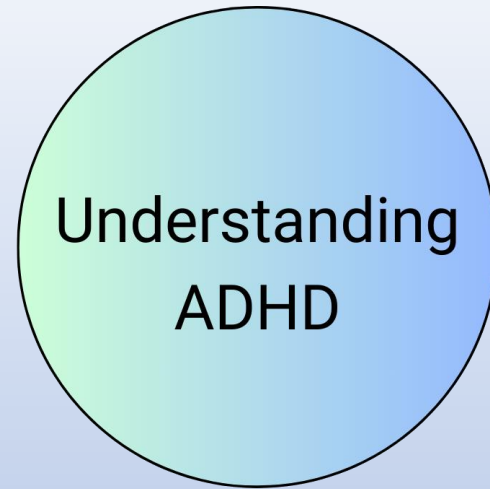
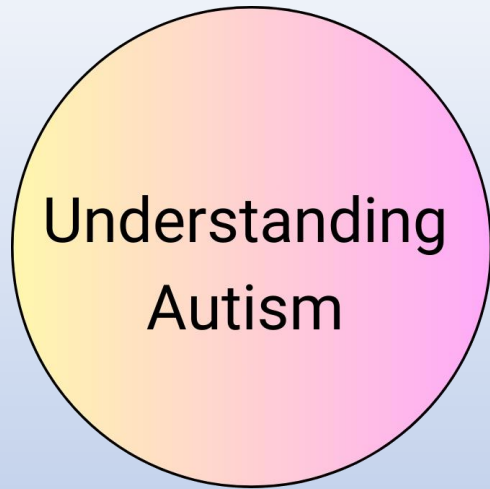
- Website
- Resources
- Advisory groups
- Workforce development
- Workstream
- Partners

# Adnoddau ar gyfer gweithwyr proffesiynol

## Resources for professionals



Community of Practice Sessions

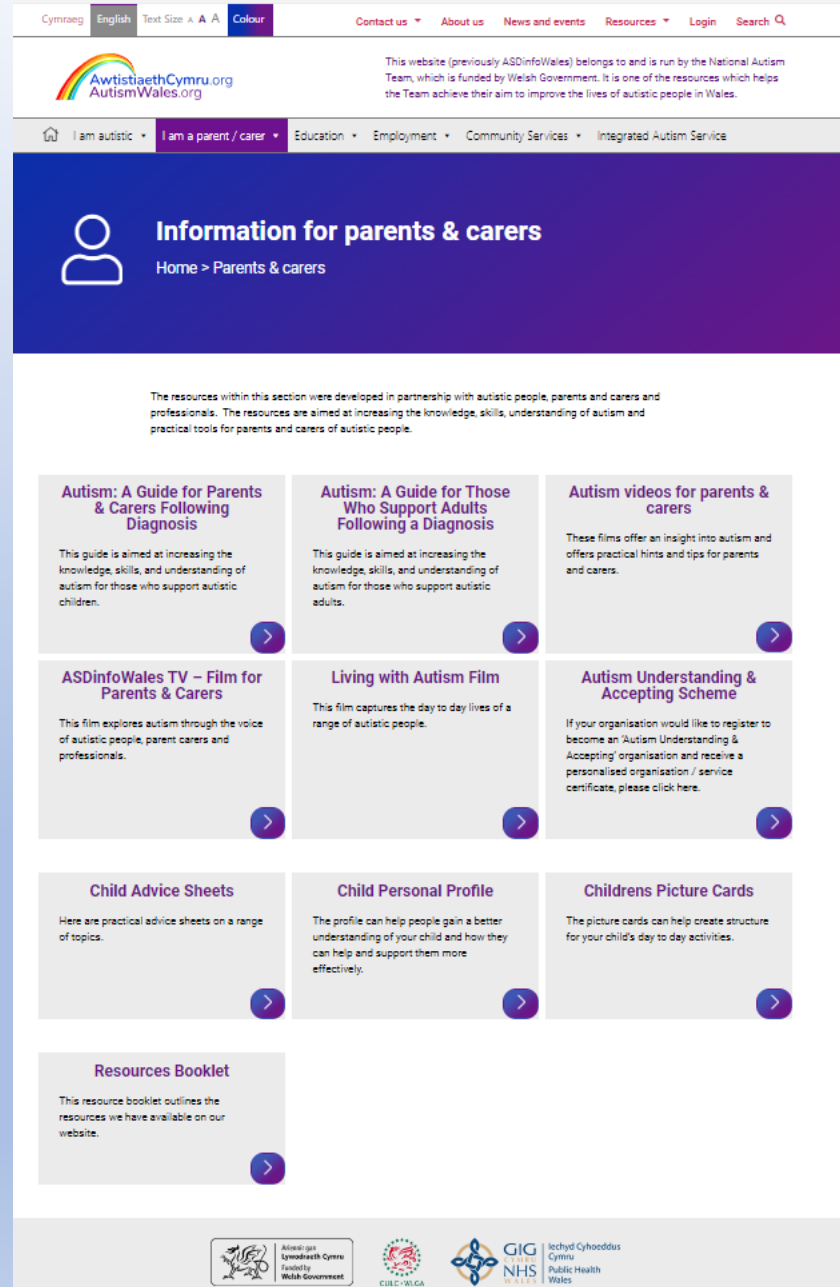


# e-learning

- Co-produced
- Intended to raise awareness & understanding
- Four modules so far
- Completed by LAs, JCPs, Capita, etc etc

# Adnoddau ar gyfer rhieni a gofalwyr

## Resources for parents & carers



The screenshot shows the website's navigation menu with options for Cymraeg, English, Text Size, and Colour. The main header includes the website logo and a description of its funding by the National Autism Team. The breadcrumb trail indicates the user is in the 'Information for parents & carers' section. The main content area features a grid of resource cards, each with a title, a brief description, and a right-pointing arrow icon. The footer contains logos for the Welsh Government, CILE-VALGA, NHS, and the Welsh Public Health Service.

Cymraeg English Text Size A A Colour Contact us About us News and events Resources Login Search

Awstiaeth Cymru.org  
AutismWales.org

This website (previously ASDInfoWales) belongs to and is run by the National Autism Team, which is funded by Welsh Government. It is one of the resources which helps the Team achieve their aim to improve the lives of autistic people in Wales.

Home Information for parents & carers

Home > Parents & carers

The resources within this section were developed in partnership with autistic people, parents and carers and professionals. The resources are aimed at increasing the knowledge, skills, understanding of autism and practical tools for parents and carers of autistic people.

- Autism: A Guide for Parents & Carers Following Diagnosis**  
This guide is aimed at increasing the knowledge, skills, and understanding of autism for those who support autistic children.
- Autism: A Guide for Those Who Support Adults Following a Diagnosis**  
This guide is aimed at increasing the knowledge, skills, and understanding of autism for those who support autistic adults.
- Autism videos for parents & carers**  
These films offer an insight into autism and offers practical hints and tips for parents and carers.
- ASDInfoWales TV – Film for Parents & Carers**  
This film explores autism through the voice of autistic people, parent carers and professionals.
- Living with Autism Film**  
This film captures the day to day lives of a range of autistic people.
- Autism Understanding & Accepting Scheme**  
If your organisation would like to register to become an 'Autism Understanding & Accepting' organisation and receive a personalised organisation / service certificate, please click here.
- Child Advice Sheets**  
Here are practical advice sheets on a range of topics.
- Child Personal Profile**  
The profile can help people gain a better understanding of your child and how they can help and support them more effectively.
- Childrens Picture Cards**  
The picture cards can help create structure for your child's day to day activities.
- Resources Booklet**  
This resource booklet outlines the resources we have available on our website.

Alwedd: gov Llywodraeth Cymru  
Ffôn: 0300 200 0000  
Welsh Government

CILE-VALGA

GIG  
NHS  
WELSH

Iechyd Cyhoeddus  
Cymru  
Public Health  
Wales



Sesiynau  
cyngori rhithwir  
rhieni a gofalwyr

## Parents & Carers Virtual Advice Sessions



### Parents & Carers Virtual Advice Sessions

Online information sessions for parents and carers, providing information about a range of topics relating to neurodivergence. Each session consists of a presentation, followed by a Q&A. The presentation part of the session will be available to watch here, following the session.

To watch a session that has already taken place, click on the 'Go to page' button.

To register for an upcoming session, click on the 'register here' button.

Professor Tony Attwood  
**Autism & Family Dynamics**  
March 20th, 9:30-11:30am

[Watch here](#) >

Ceri Reed, Parents Voices in Wales  
**Advocating For Your Child**  
April 25th, 10:00am -12:00pm

[Watch here](#) >

Emma Durman, Outside  
**Supporting Siblings**  
May 15th, 10:00am -12:00pm

[Watch here](#) >

Melissa Hutchings, ASD Family Info  
**Anxiety Management**  
June 12th, 10:00am -12:00pm

[Watch here](#) >

Behaviour Support Hub  
**Managing Meltdowns**  
July 17th, 10:00am -12:00pm

[Register here](#) >

Catrina Lowri, Neuroteachers  
**Support For Your ND Child at School**  
September 12th, 10:00am -12:00pm

[Register here](#) >

Nicky Heady  
**Autistic Girls & Women**  
October 16th, 10:00am -12:00pm

Emma Durman, Outside  
**Staying Safe Online**  
November 14th, 10:00am -12:00pm

Catrina Lowri, Neuroteachers  
**PDA - A Guide For Parents**  
December 12th, 10:00am -12:30pm



[www.autismwales.org](http://www.autismwales.org)

[www.neurodivergencewales.org](http://www.neurodivergencewales.org)

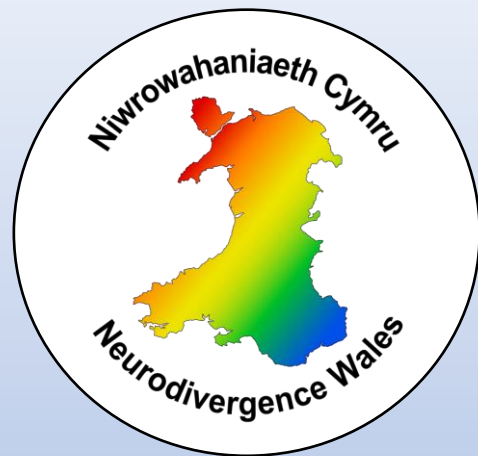
Symud i ND

Move to ND



The journey continues





[www.neurodivergencewales.org](http://www.neurodivergencewales.org)