



Tuag at Dîm Niwrowahaniaeth Cenedlaethol

Tîm Cenedlaethol Awtistiaeth

The National Autism Team



- Sefydlwyd i helpu cefnogi cyflwyniad y rhaglen awtistiaeth yng Nghymru.
- Cynhelir gan Gymdeithas Llywodraeth Leol Cymru.
- Wastad wedi gweithio mewn partneriaeth agos gyda Llywodraeth Cymru, Arweinwyr Awtistiaeth Lleol o fewn awdurdodau lleol a byrddau iechyd, budd-ddeiliaid allweddol a grwpiau ymgynghorol.
- Rôl allweddol o ran datblygu adnoddau, codi ymwybyddiaeth, hyfforddi a hyrwyddo gwell dealltwriaeth o awtistiaeth yn genedlaethol



Tîm Cenedlaethol Awtistiaeth

The National Autism Team



- Datblygiadau strategol
- Polisi
- Ymarfer
- Partneriaeth



Supplementary
Annual Report
2021/22



Tîm Cenedlaethol Awtistiaeth

The National Autism Team

- Digwyddiadau
- Ffilmiau
- Ymgyrchoedd
- Cynlluniau a chanllawiau
- Arloesi
- Model Unwaith i Gymru



Tîm Cenedlaethol Awtistiaeth

The National Autism Team



- Gwefan ac adnoddau
- Y Gwasanaeth Awtistiaeth Integredig
- Fforymau a chydlynau – yr arweinwyr sy'n sail i'r gwaith

Gwella bywydau pobl awtistig a'u teuluoedd
yng Nghymru



Tîm Cenedlaethol
Awtistiaeth

The National
Autism Team



- Cerrig milltir allweddol
Proffil yn y cyfryngau
Adnodd dibynadwy
Cynhadledd Lles
Covid 19



**Tîm Awtistiaeth
Rhithiol Cymru Covid-
19**

Cydweithio

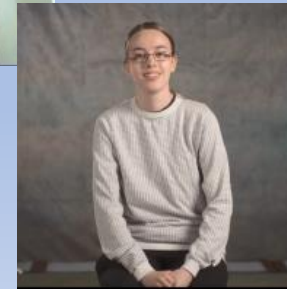
Working
together



Cyd-gynhyrchu yw sylfaen ein holl waith – mae symud tuag at gyd-gynhyrchu'n hanfodol.

- Dechreuodd ein hadnoddau gael eu cynhyrchu ar y cyd â phobl awtistig, eu teuluoedd a gweithwyr proffesiynol, drwy:
 - Grwpiau ymgynghorol
 - Gweithgorau
 - Gweithio mewn partneriaeth

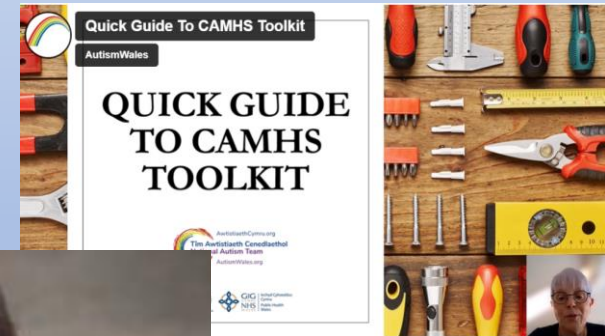
Hyrwyddo llais pobl awtistig



Cydweithio

Working
together

- Ffilm i rieni / gofalwyr
- Ffilm ac adnoddau AB a dysgu yn y gweithle
- Ffilm deall awtistiaeth
- Pecyn gwaith arbenigol CAMHS
- Gweithredu'r Cod Awtistiaeth



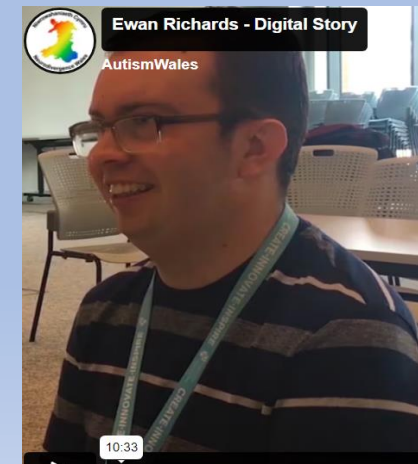
Cydweithio

Working together



Rydym wedi bod yn ddigon ffodus i gael cydweithio ag amrywiaeth eang o bobl anhygoel dros flynyddoedd lawer.

Mae rhai wedi bod ar y daith hon gyda ni ers amser maith – Keith, ein Cadeirydd am y dydd, a’n siaradwr nesaf, Ewan.





Tîm Niwrowahaniaeth Cenedlaethol



www.autismwales.org

www.neurodivergencewales.org

Symud i ND

Move to ND

Datblygiad naturiol

Esblygiad nid chwyldro

Datblygu ar sylfeini cadarn

Cydweddu â rhaglen LIC



Symud i ND

Move to ND



www.autismwales.org

www.neurodivergencewales.org

- Cylch gwaith
- Partneriaid
- Proses
- Cynlluniau wedi'u diweddaru
- Hyfforddiant
- Gwell dealltwriaeth a derbyniad
- Materion anodd





www.autismwales.org

www.neurodivergencewales.org

Symud i ND

Move to ND

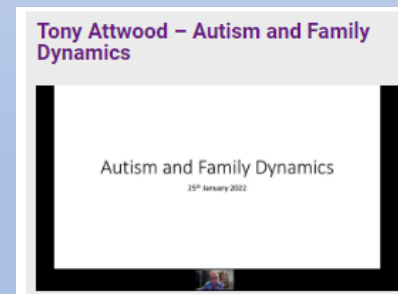
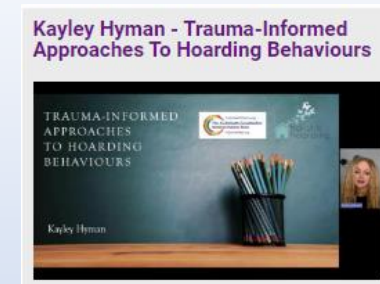
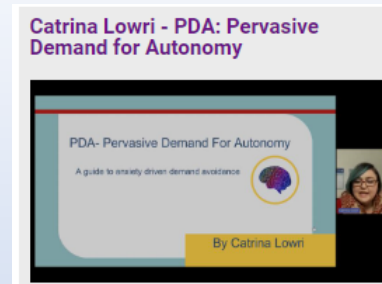
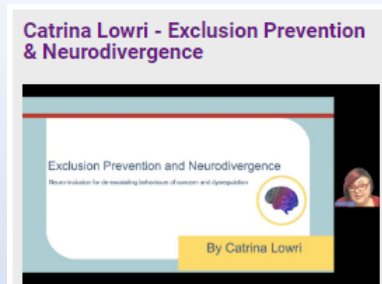


- Gwefan
- Adnoddau
- Grwpiau ymgynghorol
- Datblygu'r gweithlu
- Ffrwd waith
- Partneriaid



Adnoddau ar gyfer gweithwyr proffesiynol

Resources for professionals



Community of Practice Sessions



eLearning

Understanding Autism

Understanding Autism



CPD
CERTIFIED
The CPD Certification
Service

[Go to module >](#)

Understanding Effective Communication and Autism

Understanding
Effective
Communication
and Autism



CPD
CERTIFIED
The CPD Certification
Service

[Go to module >](#)

Understanding Assessment and Autism

Understanding
Assessment and
Autism



CPD
CERTIFIED
The CPD Certification
Service

[Go to module >](#)

Understanding ADHD

Understanding
ADHD



[Go to module >](#)

Adnoddau ar gyfer
rhieni a gofalwyr

Resources for
parents & carers



Cymraeg English Text Size: A A A Colour Contact us About us News and events Resources Login Search

This website (previously ASDInfoWales) belongs to and is run by the National Autism Team, which is funded by Welsh Government. It is one of the resources which helps the Team achieve their aim to improve the lives of autistic people in Wales.

Home | I am autistic | I am a parent / carer | Education | Employment | Community Services | Integrated Autism Service

Information for parents & carers

Home > Parents & carers

The resources within this section were developed in partnership with autistic people, parents and carers and professionals. The resources are aimed at increasing the knowledge, skills, understanding of autism and practical tools for parents and carers of autistic people.

- Autism: A Guide for Parents & Carers Following Diagnosis**
This guide is aimed at increasing the knowledge, skills, and understanding of autism for those who support autistic children.
- Autism: A Guide for Those Who Support Adults Following a Diagnosis**
This guide is aimed at increasing the knowledge, skills, and understanding of autism for those who support autistic adults.
- Autism videos for parents & carers**
These films offer an insight into autism and offers practical hints and tips for parents and carers.
- ASDInfoWales TV – Film for Parents & Carers**
This film explores autism through the voice of autistic people, parent carers and professionals.
- Living with Autism Film**
This film captures the day to day lives of a range of autistic people.
- Autism Understanding & Accepting Scheme**
If your organisation would like to register to become an 'Autism Understanding & Accepting' organisation and receive a personalised organisation / service certificate, please click here.
- Child Advice Sheets**
Here are practical advice sheets on a range of topics.
- Child Personal Profile**
The profile can help people gain a better understanding of your child and how they can help and support them more effectively.
- Childrens Picture Cards**
The picture cards can help create structure for your child's day to day activities.
- Resources Booklet**
This resource booklet outlines the resources we have available on our website.

Sesiynau Cyngori Rhithwir i Rieni a Gofalwyr

Parents & Carers Virtual Advice Sessions



Parents & Carers Virtual Advice Sessions

Online information sessions for parents and carers, providing information about a range of topics relating to neurodivergence. Each session consists of a presentation, followed by a Q&A. The presentation part of the session will be available to watch here, following the session.

To watch a session that has already taken place, click on the 'Go to page' button.

To register for an upcoming session, click on the 'register here' button.

Professor Tony Attwood
Autism & Family Dynamics
March 20th, 9:30-11:30am

[Watch here](#) >

Ceri Reed, Parents Voices in Wales
Advocating For Your Child
April 25th, 10:00am -12:00pm

[Watch here](#) >

Emma Durman, Outside
Supporting Siblings
May 15th, 10:00am -12:00pm

[Watch here](#) >

Melissa Hutchings, ASD Family Info
Anxiety Management
June 12th, 10:00am -12:00pm

[Watch here](#) >

Behaviour Support Hub
Managing Meltdowns
July 17th, 10:00am -12:00pm

[Register here](#) >

Catrina Lowri, Neuroteachers
Support For Your ND Child at School
September 12th, 10:00am -12:00pm

[Register here](#) >

Nicky Heady
Autistic Girls & Women
October 16th, 10:00am -12:00pm

Emma Durman, Outside
Staying Safe Online
November 14th, 10:00am -12:00pm

Catrina Lowri, Neuroteachers
PDA - A Guide For Parents
December 12th, 10:00am -12:30pm



www.autismwales.org

www.neurodivergencewales.org

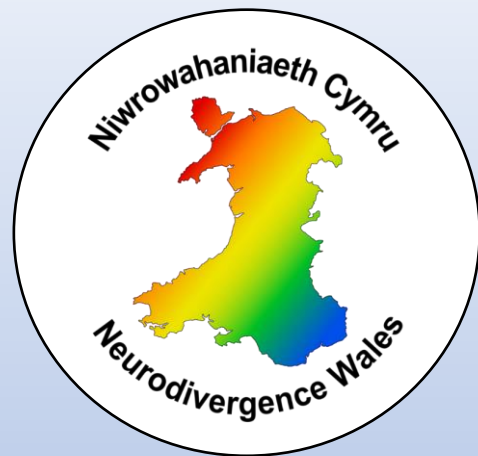
Symud i ND

Move to ND



Mae'r daith yn parhau





www.neurodivergencewales.org